

■ MBT-800

Manual, Horizontal Indexing Tables with Hirth Gear

MBT series tables are designed with a 2 piece Hirth coupling for manually rotating in multiples of either 1° or 5° increments to an accuracy of +/-2 seconds of arc. The tables are clamped pneumatically or hydraulically depending upon model, by a simple actuation lever of hand-held pendant. A vernier scale and pointer offers a reference during rotation, however, a digital scale is available on larger table. These heavy duty, but simple and self contained tables are ideal for Jobs Shops or for applications where the indexing table needs to be frequently removed and re-installed to accommodate machine tool utility.



GENERAL DETAILS

Table size = 800 x 800 mm
 Diameter of Pilot bore = $\varnothing 60^{H7}$ mm
 Clamp operation Pressure = 5~8 kgf/ cm² (Pneumatic)
 → Up/Down (unclamp/ clamp) control by Pull switch.
 Index number (standard): Each every 5 degrees indexing (72D)
 Index number (available): Each every 1 degree indexing (360D)

Overall height = 280 mm
 Width of T-slots = 22^{H7} mm
 Direction of rotation: CW/CCW (Bi-directional)
 → Rotation operated by hand (manually)
 Ambient temperature 18° ~ 40°C

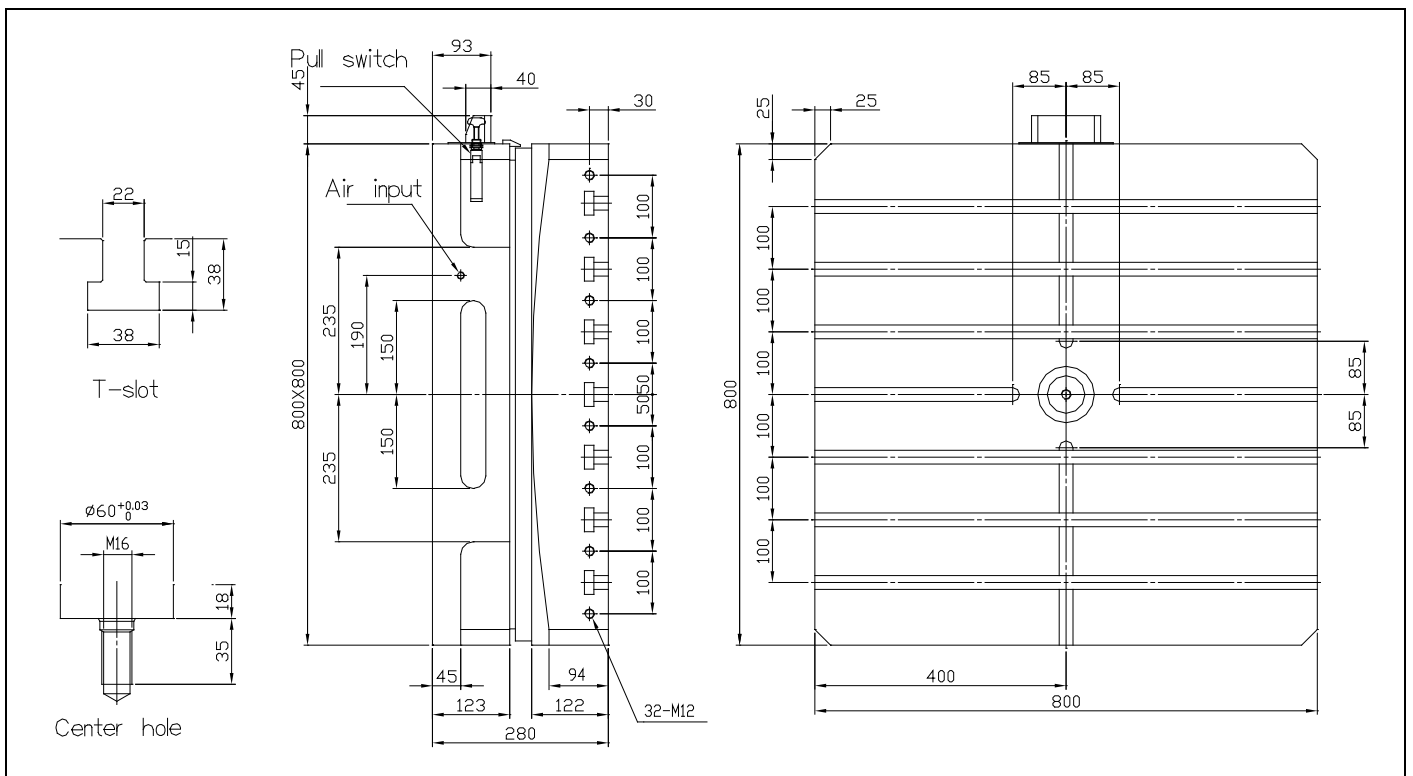
TECHNICAL DATA/ CAPACITIES

Permissible load - Vertical machining thrust = 4,500 kgf
 (With table clamped) - Torque = 1,080 kgf-m
 - Tilting moment = 1,200 kgf-m
 Indexing accuracy s = ±2 sec
 Repeatability = ±1 sec

Loading capacity = 3,000 kg
 Net weight = 1,100 kg
 Clamping torque = 5,400 kgf

Optional

Table top special made available or adapt plate additional



* We reserve the right to make arising from constant product development without advance notice.